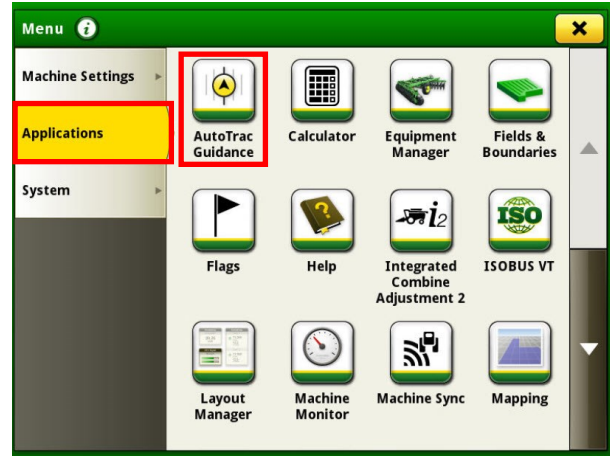


GEN 4: A+B STRAIGHT TRACK SETUP

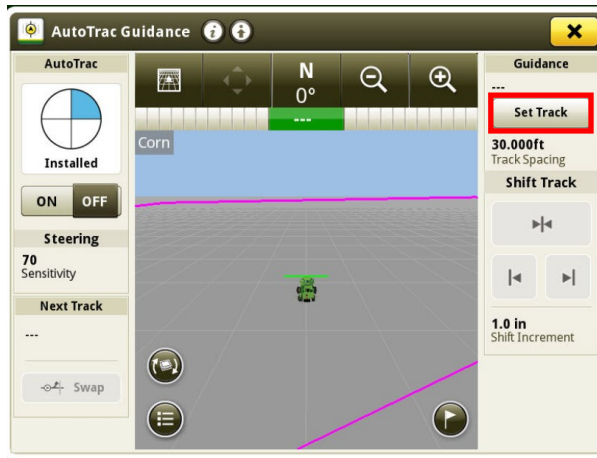
1 Select 'Menu' at the bottom right-hand corner.



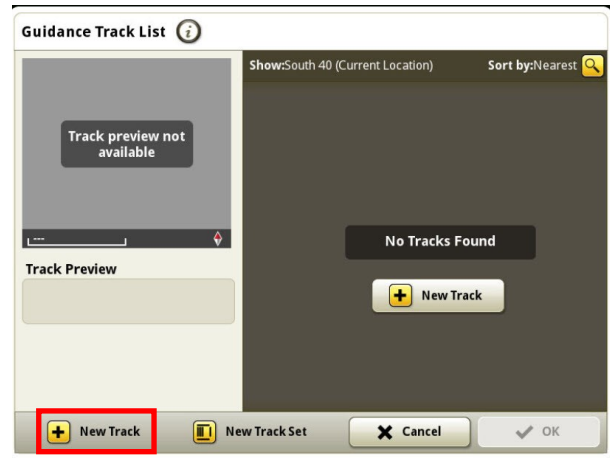
2 Select 'Applications', then 'AutoTrac Guidance'.



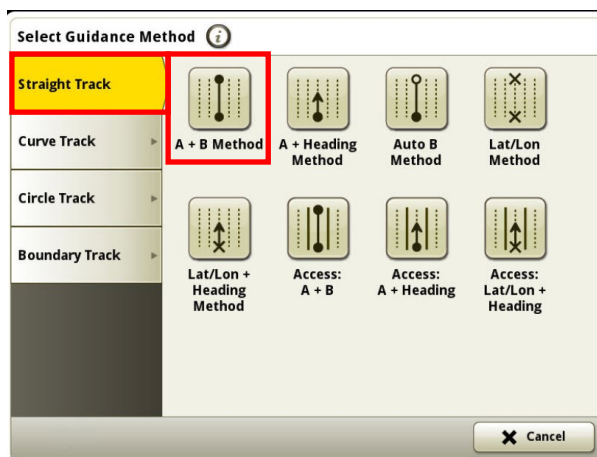
3 Select 'Set Track'.



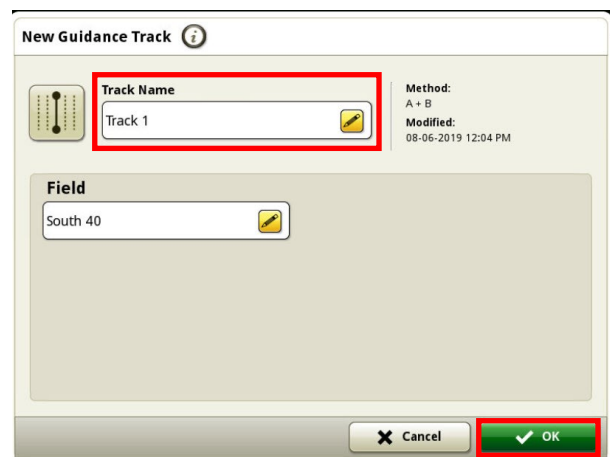
4 Select 'New Track'.



5 Select 'Straight Track', then 'A+B Method'.

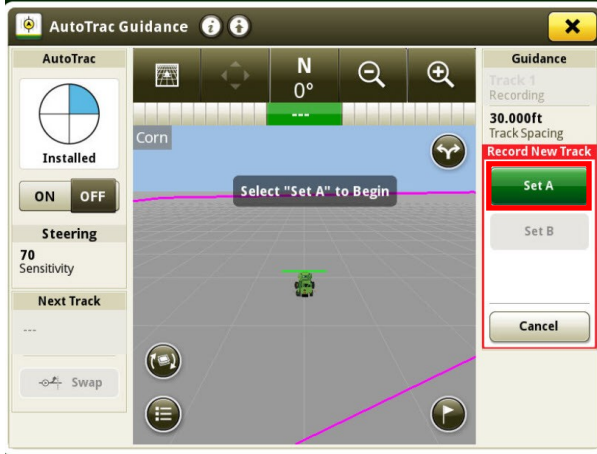


6 Enter a Track Name, then select 'OK'.

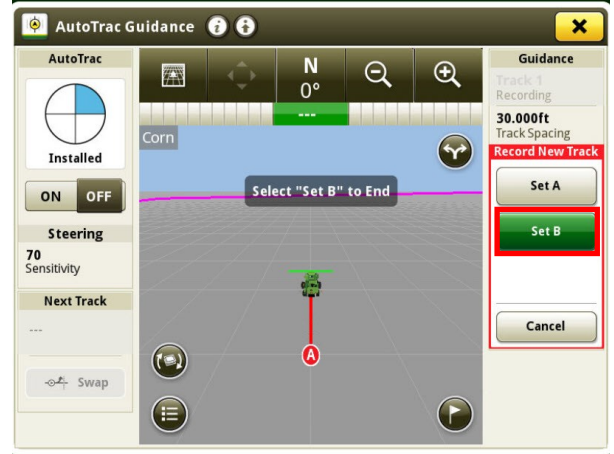


GEN 4: A+B STRAIGHT TRACK SETUP

7 Select 'Set A'.



8 Drive at least 10 feet, then select 'Set B'.



9 Turn your steering 'On'. You are now ready to press the Resume Switch.

