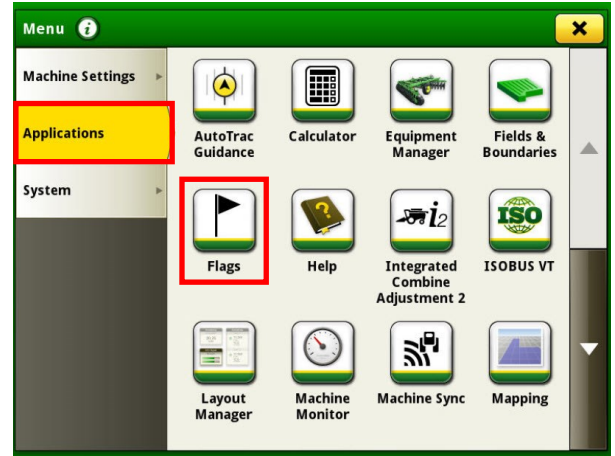


GEN 4: FLAGS

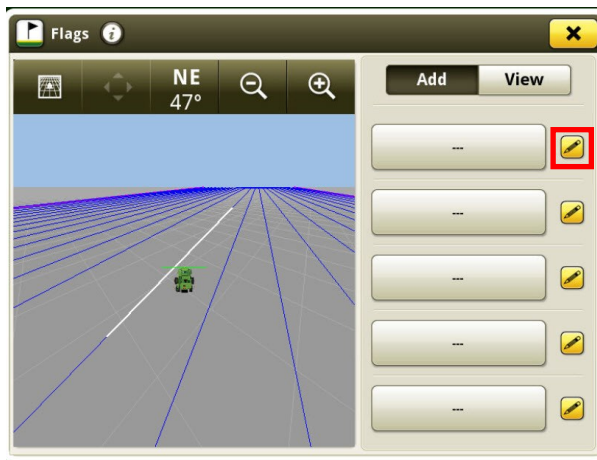
1 Select 'Menu' at the bottom right-hand corner.



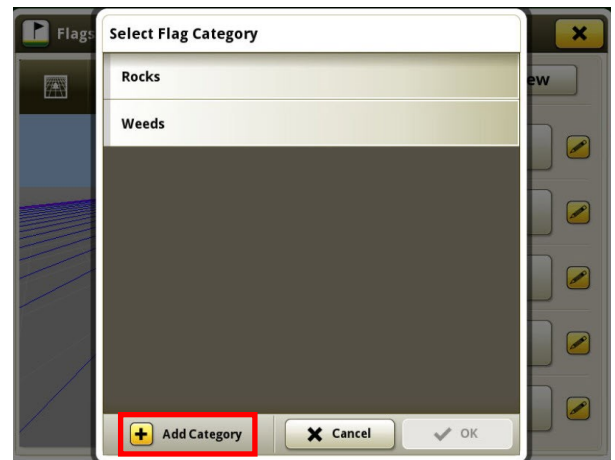
2 Select 'Applications', then 'Flags'.



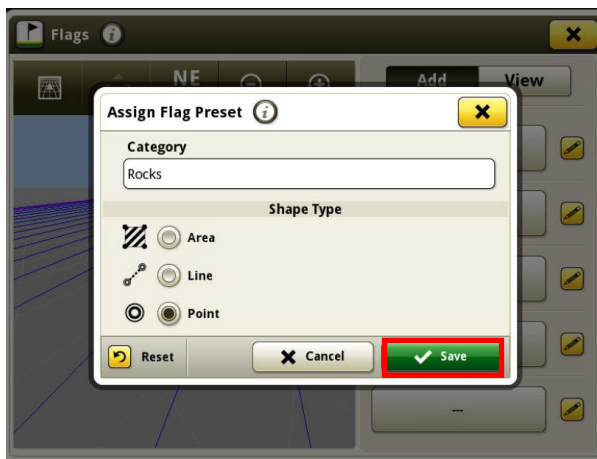
3 Select the pencil to create or edit a flag.



4 Select a Flag Category, or 'Add Category'.



5 Choose a flag type. Select 'Save'.



6 To drop a flag, select the corresponding button. To view flags you have dropped, select 'View'.

