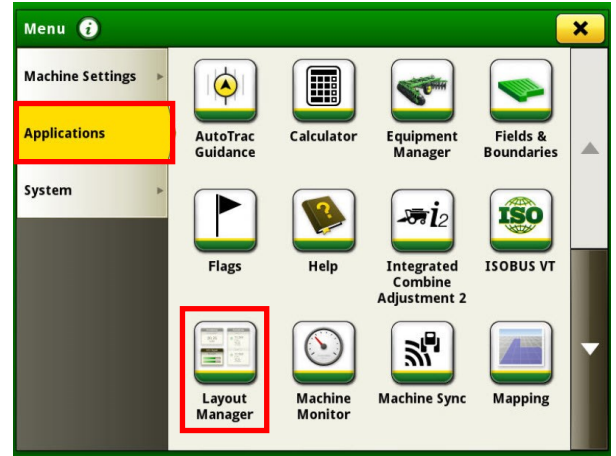


GEN 4: LAYOUT MANAGER

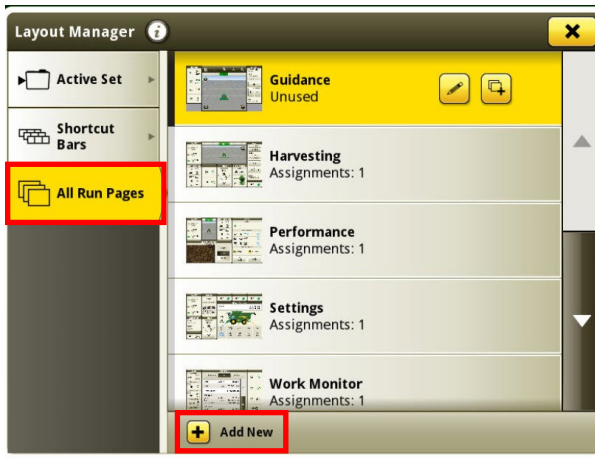
1 Select 'Menu' at the bottom right-hand corner.



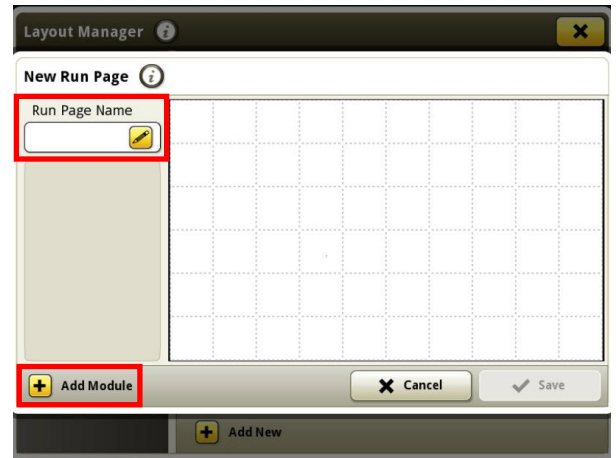
2 Select 'Applications', then 'Layout Manager'.



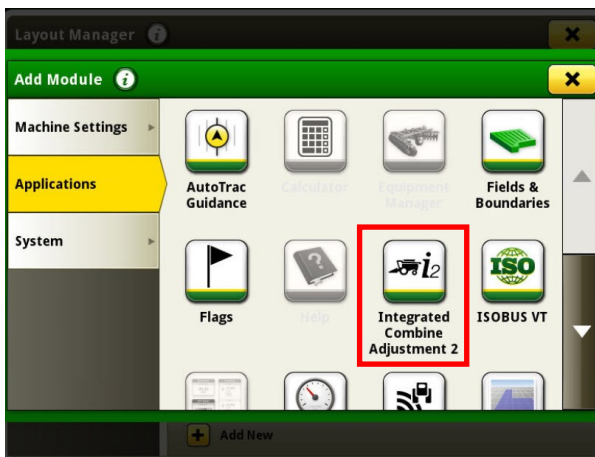
3 Select 'All Run Pages', then 'Add New'.



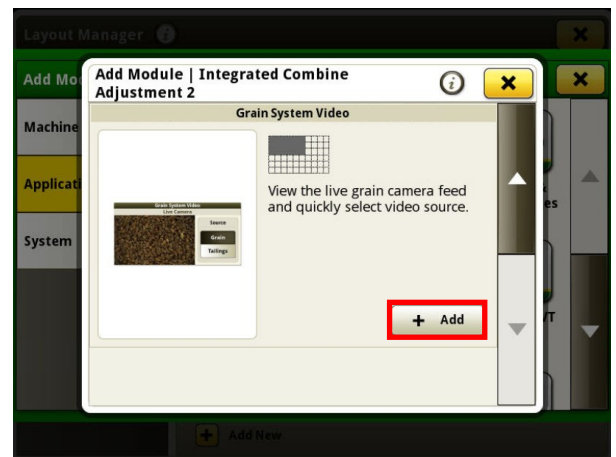
4 Enter a Run Page Name, then select 'Add Module'.



5 Choose an information source.

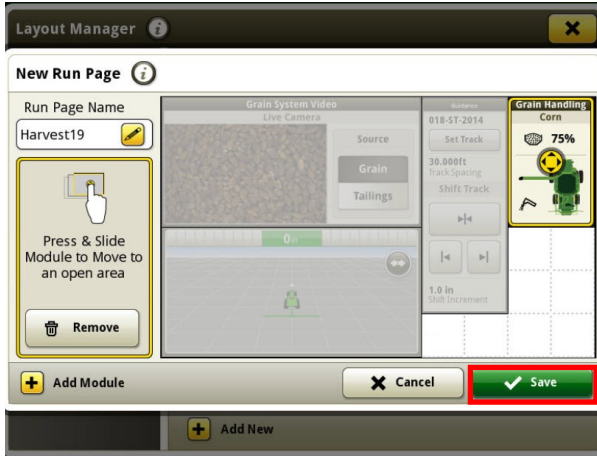


6 Choose the information you'd like to see, then select 'Add'.

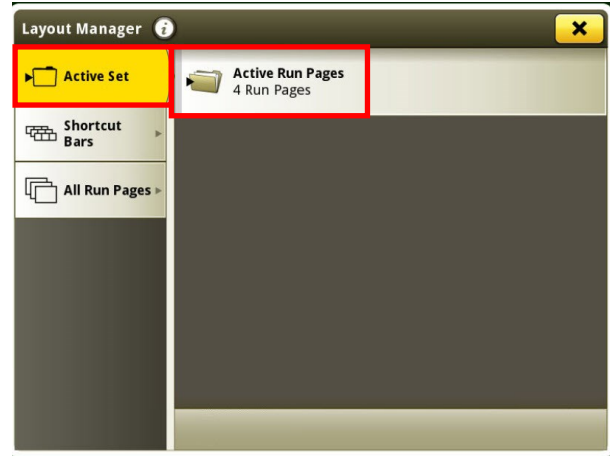


GEN 4: LAYOUT MANAGER

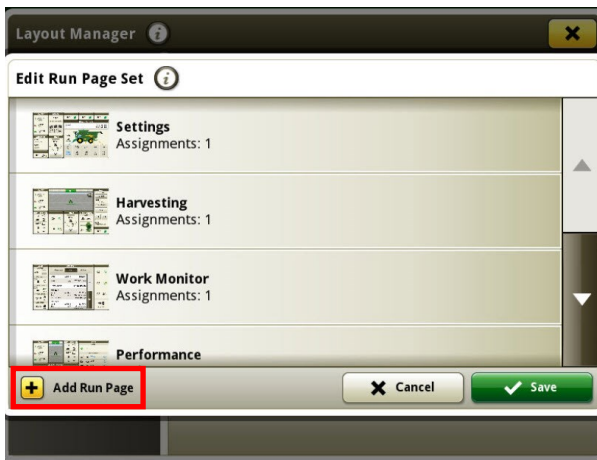
7 Once you've chosen the information and layout you'd like, select 'Save'.



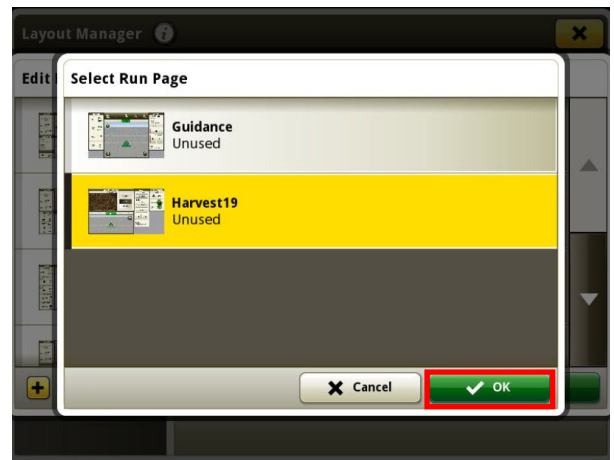
8 Select 'Active Set', then 'Active Run Pages'.



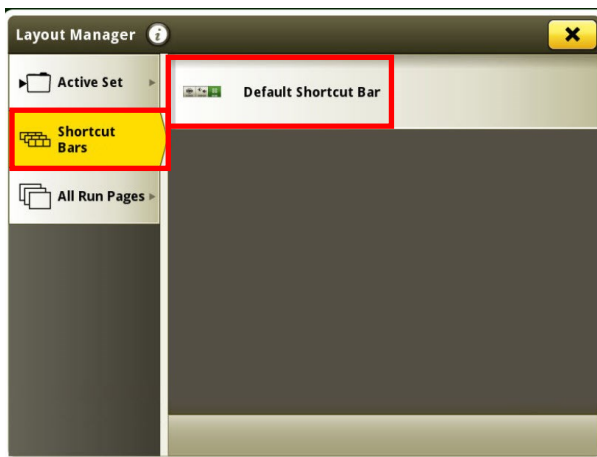
9 Select 'Add Run Page'.



10 Select the run page you created, then select 'OK'.



11 To customize the shortcut bar, select 'Shortcut Bars', then 'Default Shortcut Bar'.



12 Add, remove, and move shortcuts until you've created your desired bar. Select 'Save'.

