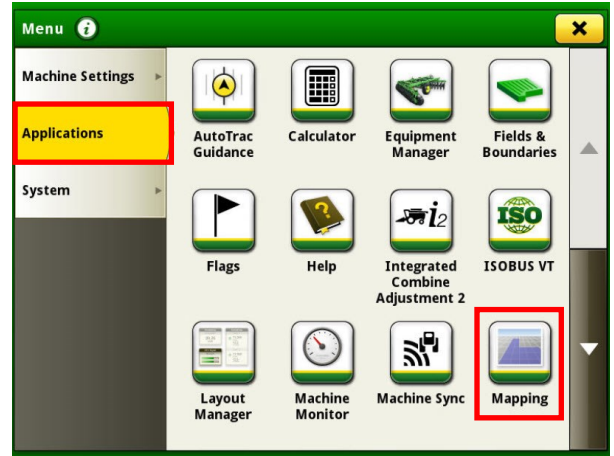


# GEN 4: YIELD MAP SETUP

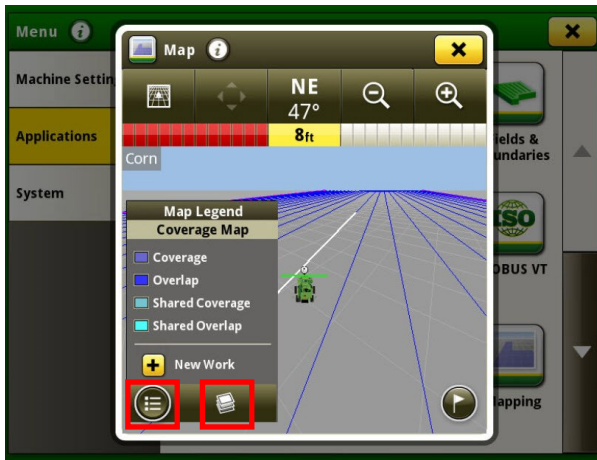
1 Select 'Menu' at the bottom right-hand corner.



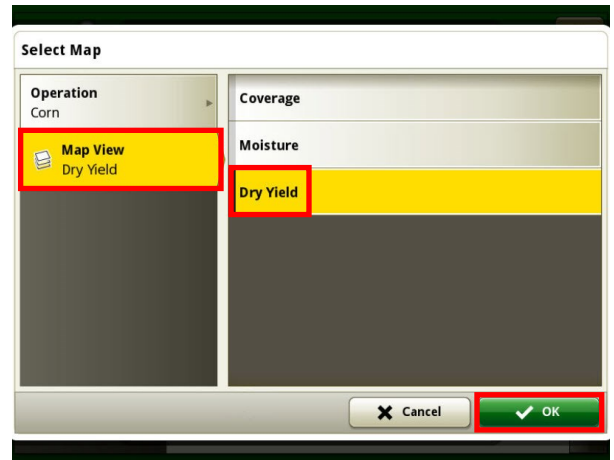
2 Select 'Applications', then 'Mapping'.



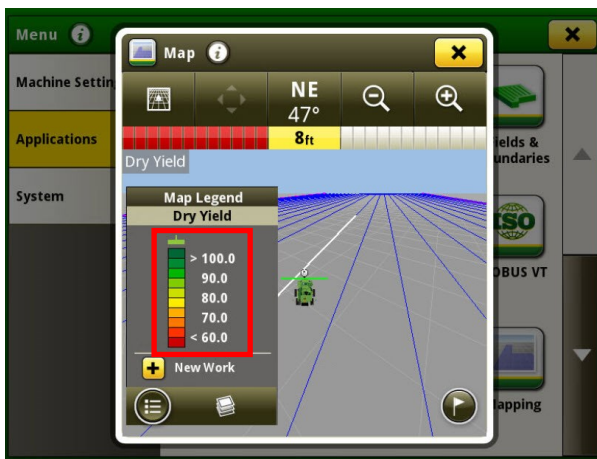
3 Select 'Details', then 'Map Layers'.



4 Select 'Map View', then 'Dry Yield'. Select 'OK'.



5 Select the yield legend.



6 Enter your upper and lower yield limits, then select 'OK'.

